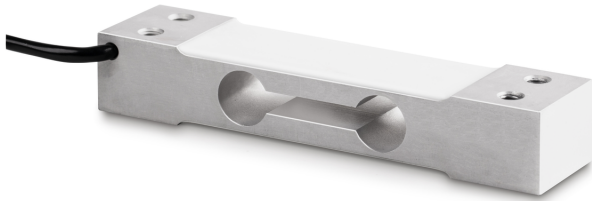


# KERN CP 3-2-3P1

**KERN**

Single-point load cell made of anodised aluminium with extra-long cable



## Category

Brand	Sauter
Product category	Measuring cell
Product group	Load cell
Product family	CP P1

## Measuring System

Weighing capacity [Max]	3 kg
Load cell connection	4-wire
Load cell OIML class	C3
Load cell - Resolution (verifiable)	3000 e
Creep error (30 minutes)	$\leq \pm 0.0167\%FS$
Safe overload	150%FS
Ultimate overload	300%FS
Zero balance	$\leq \pm 2.0\%FS$
Maximum platform size	250×350 mm
Load cell - characteristic value - nominal	2 mV/V
Load cell - characteristic value - variance	0,2 mV/V
Load cell - Y-value	10000
Load cell - Combined error	0,023%
Load cell - Dead load [Min] (%)	0%
Measuring applications	mass
Load cell - Input resistance - nominal	409 $\Omega$
Load cell - Output resistance - nominal	350 $\Omega$
Load cell - Isolation resistance - [Min]	5000 M $\Omega$
Load cell - Recommended excitation voltage [Min]	5 V
Load cell - Recommended excitation voltage [Max]	12 V
Load cell - Input resistance - variance	6 $\Omega$

Load cell - Output resistance - variance 3  $\Omega$

Directions of force compression

## Approval

CE mark ✓

## Construction

Design	Singlepoint load cell
Dimension (W×D×H)	130×30×22 mm
Material	aluminium
Cable length	2 m
Mounting - force application	2 × threaded hole M6
Mounting - force dissipation	2 × threaded hole M6

## Functions

IP protection - complete device IP65

## Environmental conditions

Use temperature [Min]	-10 °C
Use temperature [Max]	40 °C
Ambient temperature [Min]	-35 °C
Ambient temperature [Max]	65 °C
Storage temperature [Min]	-40 °C
Storage temperature [Max]	70 °C

## Packing & Shipping

Readability force [d] (N)	1 d
Dimensions packaging (W×D×H)	165×100×45 mm
Net weight	0,225 kg
Shipping method	Parcel service
Net weight approx.	0,25 kg
Gross weight approx.	0,30 kg
Shipping weight	0,27 kg

## Services (optional)

Article number for DAkKS calibration (compressive force) 963-261V

# KERN CP 3-2-3P1



Single-point load cell made of anodised aluminium with extra-long cable

## Pictograms

### STANDARD

---



### OPTION

---

